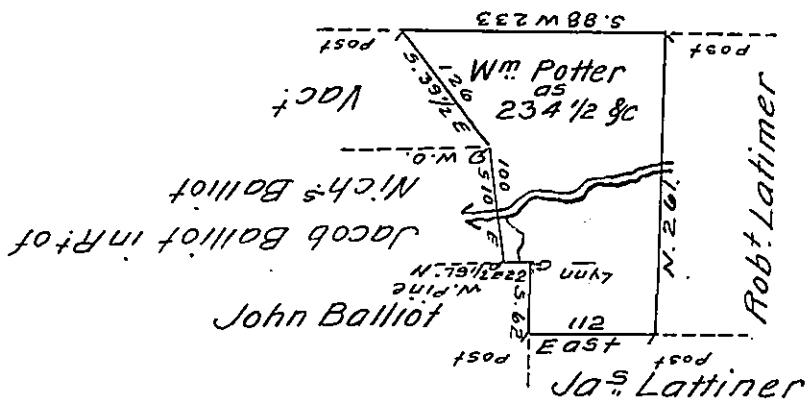


Hazle
Luzerne

Old surveys



A Draft of a tract of land Called Friendship Situate on Little Black Creek in the County of Luzerne Containing two Hundred & thirty four Acres 1/2 Surveyed for William Potter the 12th day of May 1794 by Virtue of a Warrant dated the 5th day of Dec^r 1793.

by W^m Gray D. S.

Daniel Brodhead Esq^r }
Surv^r Gen^l }

IN TESTIMONY that the above is a copy of the original remaining on file in the Department of Internal Affairs of Pennsylvania, made conformably to an Act of Assembly approved the 16th day of February, 1833, I have hereunto set my Hand and caused the Seal of said Department to be affixed at Harrisburg, this twenty ninth day of September 1910.

Nancy Horick
Secretary of Internal Affairs.